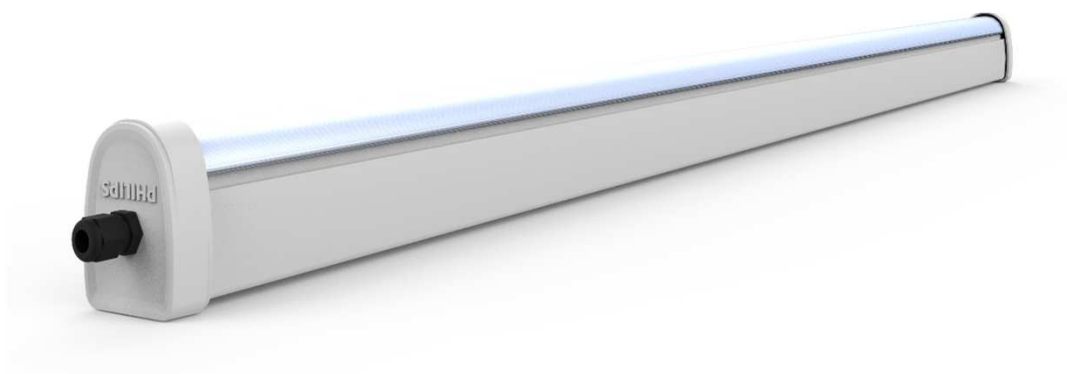
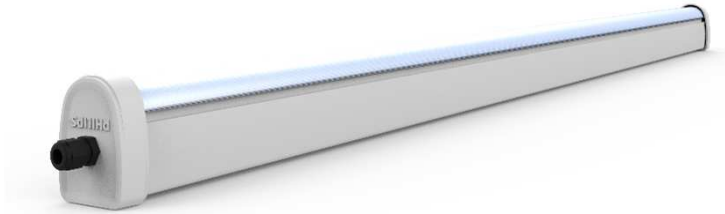




Essential Smartbright IP65 Batten – WT150C



Unique Selling Points



- Excellent quality assure high performance in harsh industrial environments
- System efficacy $>120\text{lm/W}$ – Energy saving 55% compared with conventional.
- 1 to 1 replacement to 1xTL5 /TL-D 36w and 2x TL-5/TLD 28w and suitable for both new install & retrofit applications
- Lifetime 30,000 hours @ $T_a45^\circ\text{C}$; BIS approbations – Safe and Reliable performance
- Sleek design comes with superior quality of polycarbonate Co-extrusion
- Comfortable Light with good color uniformity and color rendering ($\text{CRI}\geq 80$).
- Versatile : Suitable for both wall and suspended mounting with relevant mounting accessories.
- IP65, effectively prevent dusts & moisture from luminaire to assure the performance for long term

Features and benefits

Dust and Waterproof- IP65

- Delivers superior lighting performance in dusty humid environment.
- No impact in lighting level and life class even in harsh environmental conditions
- L70B50 30K hours @ Ta45°C
- IP65 prevents dusts & moisture from luminaire to assure the performance for long term

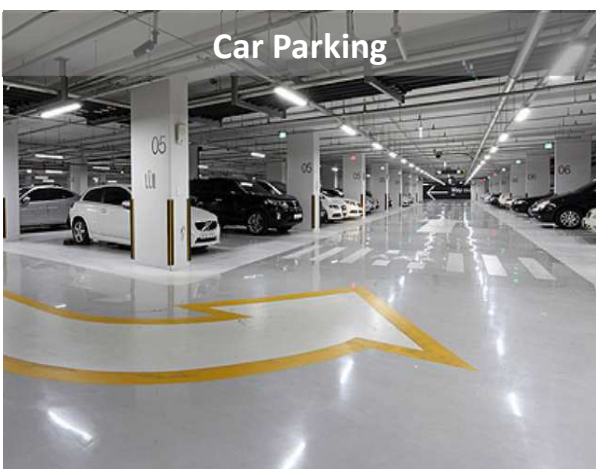
Efficient Electronics/LED

- High system efficacy > 120lm/w leading to low connected power.
- Sustained Lighting Performance and long life
- Available in multiple lumen packs and CCT's : 2000/4000 lm variant in 4000/6500K CCT

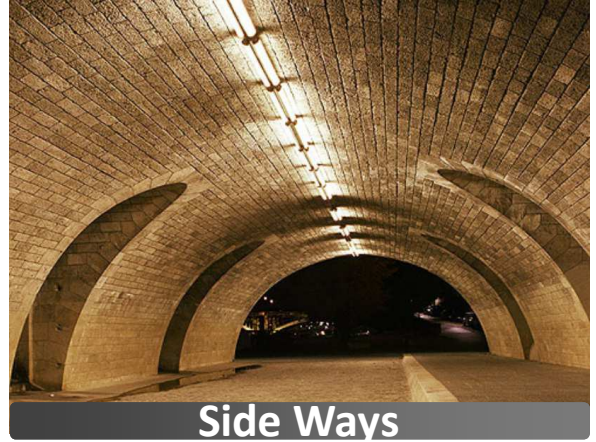
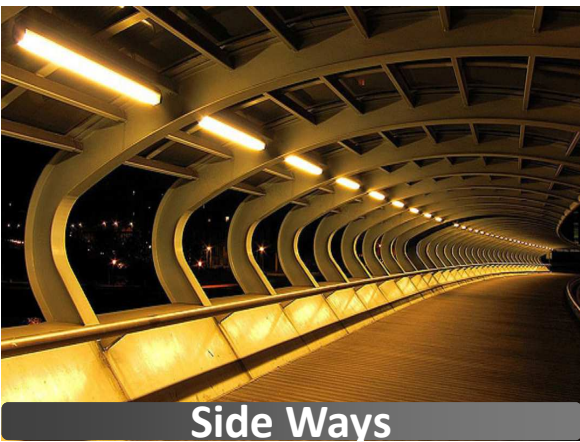
High quality of material and design

- UV stabilized polycarbonate co-extruded housing comes with IK08 Impact resistance
- Stainless Steel rust proof accessories
- IP65 protection over lifetime
- Robust and reliable design perfectly suitable for versatile Indoor industrial applications
- Standard 4 ft size in 4000/6500K color temperature

Application



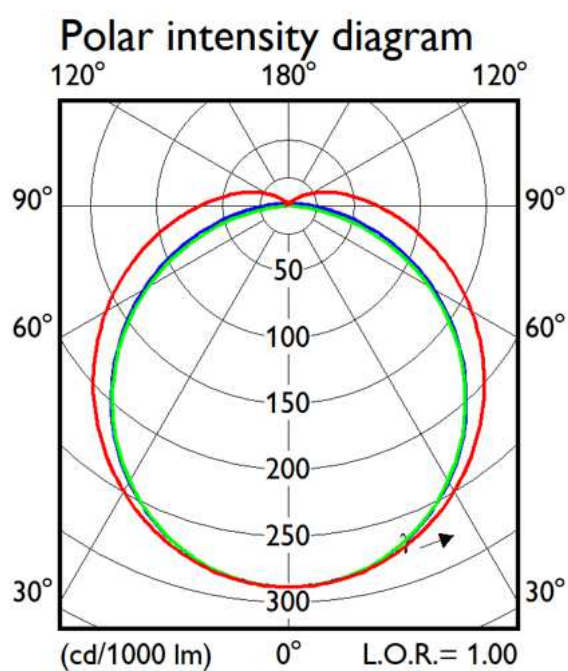
Application



Uniform Light Output

Lighting comfort improves productivity

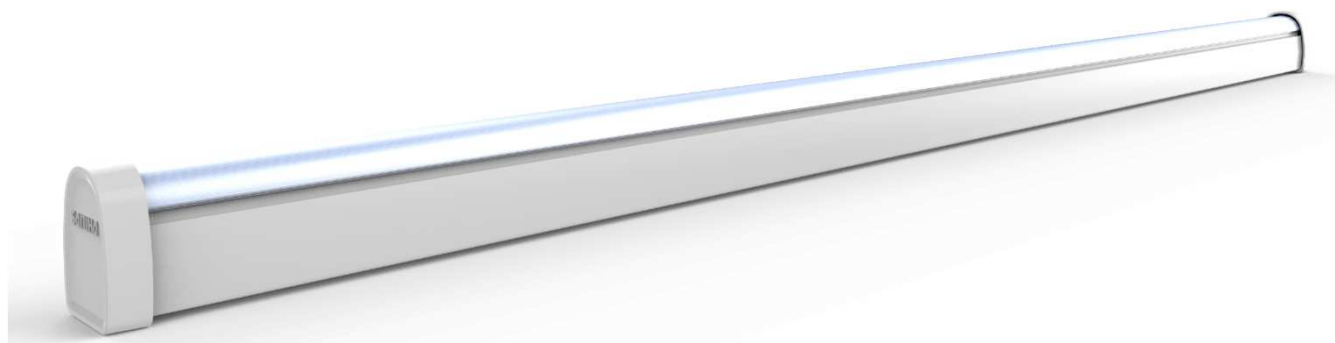
- Accurate distribution of light, dramatically improved uniformity and lux level



Light output ratio	1.00
Service upward	0.10
Service downward	0.90

CIE flux code 40 70 90 90 100

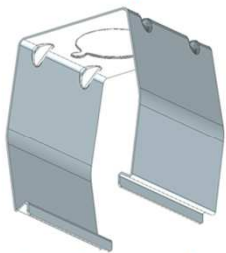
UGRcen (4Hx8H, 0.25H) 24



Construction and Materials

All Philips key components and production assure long lasting performance

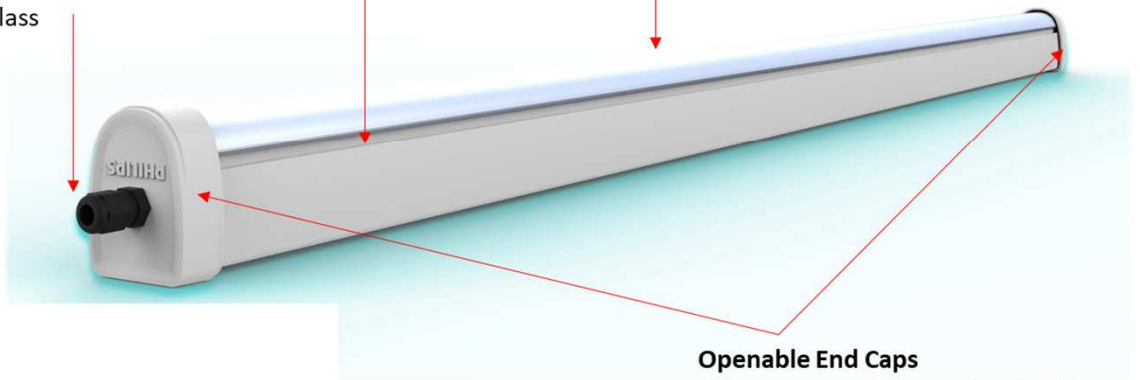
SS mounting Accessories
Long life and easy To handle



Product Construction

Sliding groove Embedded in PC housing
Easy to change installation place

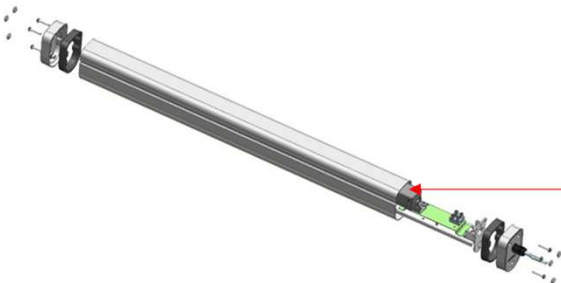
Gland for IP protection
Provide IP65 rating over life class



Housing:
UV-shielding Co-extruded Polycarbonate Housing for semi-outdoor environment

Openable End Caps
Polycarbonate End caps fixed with M3 Screws which give access to Driver for serviceability

Constant Current Electronic Driver



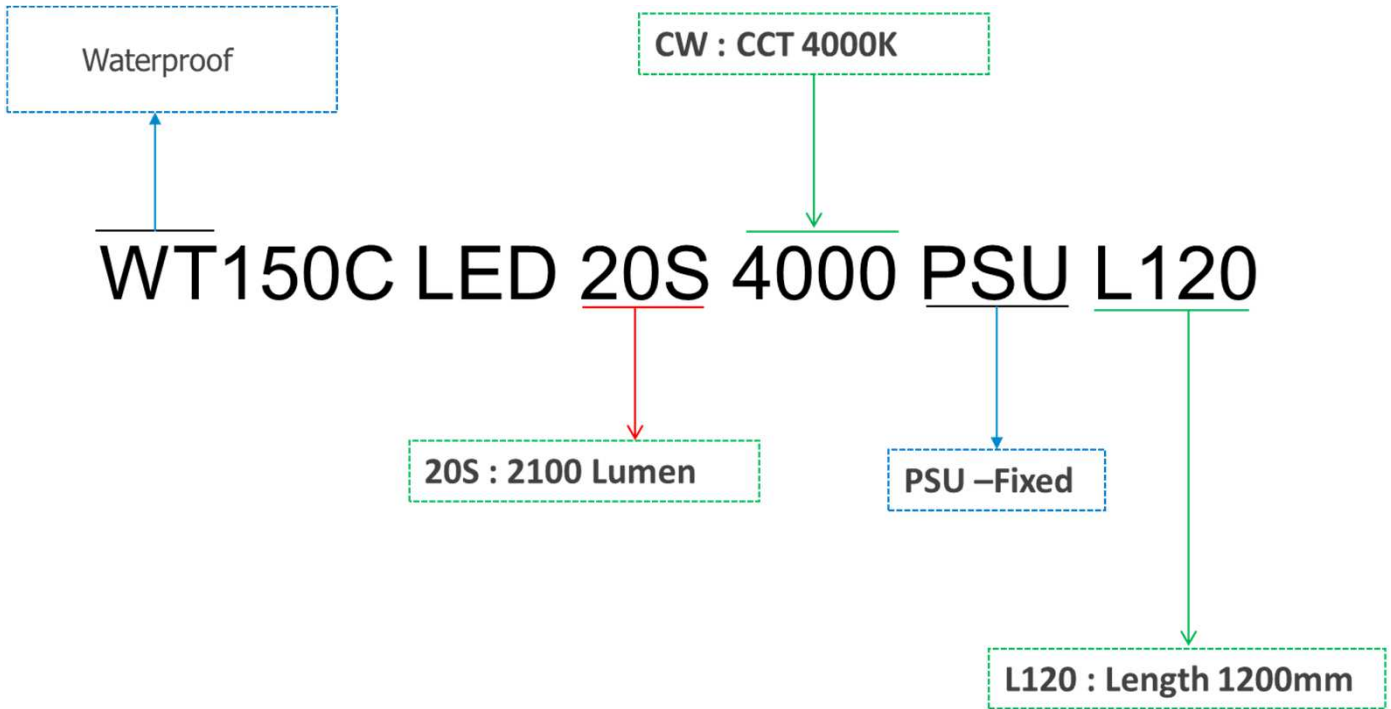
Product Specifications

Specification		WT150C LED20S
System	Flux packages (lm)	2100lm
	CCT/color	4000K/6500K
	CRI	≥ 80
	System efficacy(typical)	>120lm/W
	System wattage	16W
	SDCM	<5
Optics	Light distribution	SY120°/ Diffused
	Optical cover	High Transmittance PC Diffuser
Electrical	Input voltage	140~270V- 50 Hz
	Power Factor	>0.85
	THD	<20%
	Driver	Fixed
	Surge protection	2.5KV
	Electrical	Class 1
Lifetime	Luminaire life time	30k hours (L70B50 @Ta45°C)
Environment	Operating temperature	- 10°C < Ta< 45°C
	Ambient temperature	45 °C
	IP Rate	IP65
	IK Rate	IK08
Mechanical	Mounting	Surface/ Suspension
	Housing material	Polycarbonate Co-extrusion
	Serviceability	Class B
Approbation / Norms	Approbation	BIS
	Sustainability	RoHS

Product Specifications

Specification		WT150C LED40S
System	Flux packages (lm)	4100lm
	CCT/color	4000K/6500K
	CRI	≥ 80
	System efficacy(typical)	>120lm/W
	System wattage	34W
	SDCM	<5
Optics	Light distribution	SY120°/ Diffused
	Optical cover	High Transmittance PC Diffuser
Electrical	Input voltage	140~270V- 50 Hz
	Power Factor	>0.85
	THD	<20%
	Driver	Fixed
	Surge protection	2.5KV
	Electrical	Class 1
Lifetime	Luminaire life time	30k hours (L70B50 @Ta45°C)
Environment	Operating temperature	- 10°C < Ta < 45°C
	Ambient temperature	45 °C
	IP Rate	IP65
	IK Rate	IK08
Mechanical	Mounting	Surface/ Suspension
	Housing material	Polycarbonate Co-extrusion
	Serviceability	Class B
Approbation / Norms	Approbation	BIS
	Sustainability	RoHS

How to read the Cat reference?

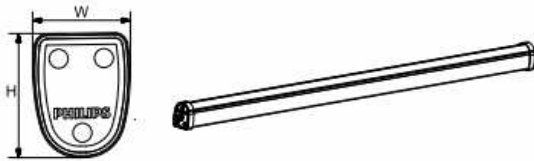


Mounting Instructions

Installation Instruction

Dimensions

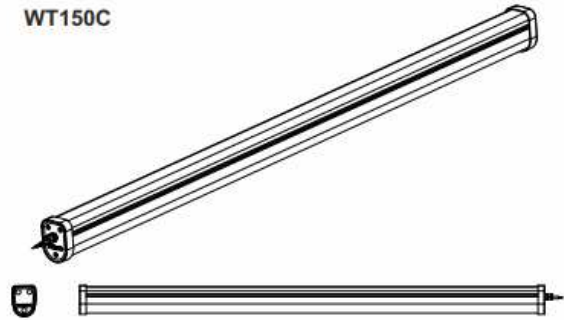
TYPE	Dimensions (mm)		
	L	W	H
4 Feet	1179	47.2	63.3



Indoor Luminaire

Smartbright Waterproof Core

WT150C

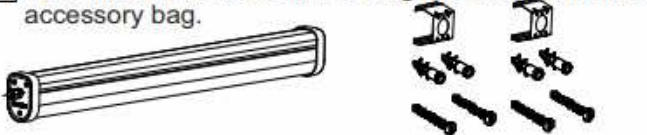


TYPE	: WT150C
VOLTAGE	: 240 V, 50 Hz
IP CLASSIFICATION	: IP 65
NET WEIGHT (4 Feet)	: 0.6 Kg approx.
APPLICATION	: INDUSTRIAL


Mounting Instructions

Surface Mounting

1 Take the luminaire out of Packing Box along with the accessory bag.

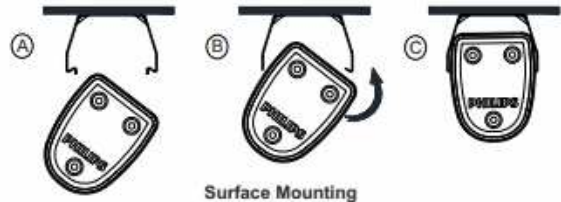
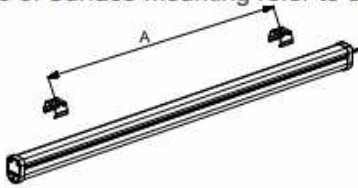


2 Fix mounting bracket onto ceiling (two anchor & two screw for single mounting bracket).




3 The distance of Surface mounting refer to distance "A".

TYPE	A (mm)
4 Feet	780±20



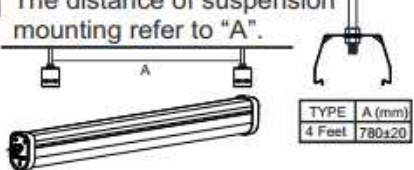
Suspension Mounting.

1




Fix the pole to ceiling surface and mount suspension bracket.

2 The distance of suspension mounting refer to "A".

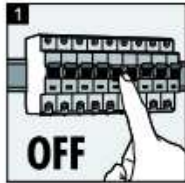


TYPE	A (mm)
4 Feet	780±20

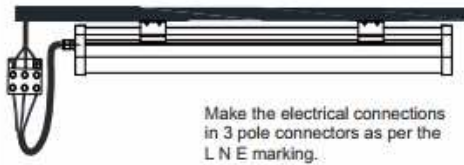
3 Suspension mounting process



4 Switch off the main power supply.



5 Connect to the main power supply.



6 CAUTION

1. The luminaire shall be installed by a qualified electrician and wired in accordance with the latest IEE electrical regulations or the national requirements.
 2. Do not switch on before completing the installation.
 3. The luminaire shall, under no circumstance, be covered with insulation matting or similar material.
 4. Polyfilm should be removed before mounting
- FAILURE OF PRODUCT DUE TO NON COMPLIANCE TO ANY OF THE ABOVE, VOIDS WARRANTY OF PRODUCT.

Ordering Details

Commercial 12NC	Product description	Spare Driver 12NC
919515813160	WT150C LED 20S 6500 PSU L120	919415811806
919515813161	WT150C LED 20S 4000 PSU L120	919415811806
919515813162	WT150C LED 40S 6500 PSU L120	919415811110
919515813163	WT150C LED 40S 4000 PSU L120	919415811110